

Cadmould Fill

Better molds! • Better parts! • More profit!

Runner balancing • Clamping force • Pressure loss • Cooling time

Cadmould Fill supports mold designers and mold makers.

Functions:

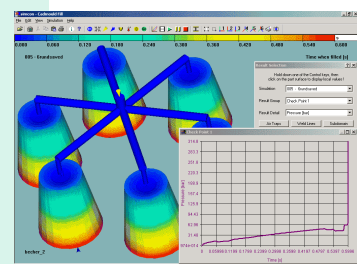
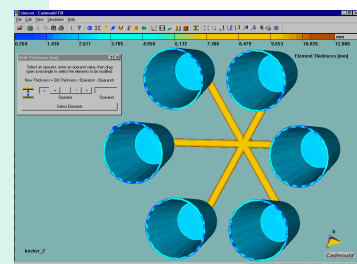
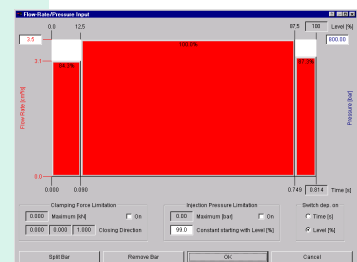
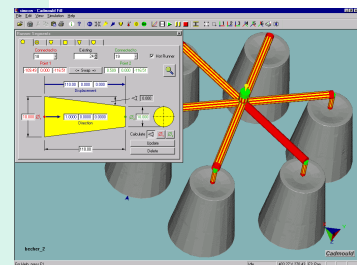
- 3D-CAD interface of stereolithography (STL) files
- Easy to use because of Microsoft® Windows® graphic user interface (GUI)
- Support of OpenGL
- Hot and cold runner design CAD system independant
- Calculate multi-cavity molds and family molds
- The internal material data base for thermoplastics uses **CAMPUS**® standards and can be edited by the user.
- An interface to the material data of **CAMPUS**® is available by using the software MCBASE of M-Base GmbH including the optionally available **Cadmould** interface.
- Easy creation of flow leaders. No CAD system necessary.
- Flow rate profiler to optimize the filling phase
- Automatic adaption of the filling process to a specified machine size

Results:

- filling pattern
- pressure distribution
- cooling time
- temperatures
- shear stress
- clamping force
- weld lines and air traps
- process parameters
- local results
- part quality

Miscellaneous:

- animation of results
- easy project documentation
- **Cadmould Rapid** calculates in multi-layers, temperature dependant and compressible.
- **Cadmould Rapid** can be upgraded to other **Cadmould** modules.



simcon kunststofftechnische Software GmbH
Technologie Park Herzogenrath
Kaiserstr. 100
D - 52134 Herzogenrath

fon: +49 (0) 2 407 908 58 0
fax: +49 (0) 2 407 908 58 58