

Cadmould Rapid

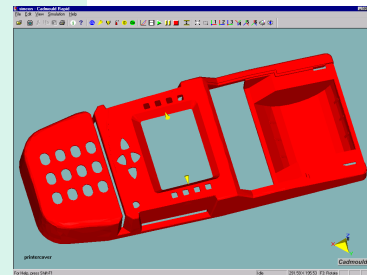
Better parts! • Better molds! • More profit!

Gates, where and how many • Clamping force • Filling pressure • Cooling time

Cadmould Rapid supports part designers.

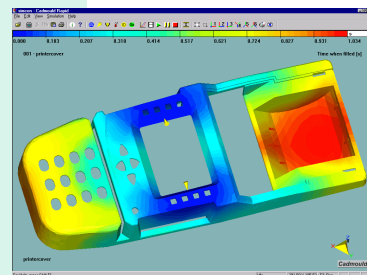
Functions:

- 3D-CAD interface of stereolithography (STL) files.
- Easy to use because of Microsoft® Windows® graphic user interface (GUI)
- No training necessary.
- Support of OpenGL.
- The internal material data base for thermoplastics uses **CAMPUS®** standards and can be edited by the user.
- An interface to the material data of **CAMPUS®** is available by using the software MCBASE of M-Base GmbH including the optionally available **Cadmould** interface.
- Easy creation of flow leaders. No CAD system necessary.



Results:

- filling pattern
- pressure distribution
- cooling time
- temperatures
- shear stress
- clamping force
- weld lines
- air traps
- process parameters
- part quality



Miscellaneous:

- animation of results
- easy project documentation
- **Cadmould Rapid** calculates in multi-layers, temperature dependant and compressible.
- **Cadmould Rapid** can be upgraded to other **Cadmould** modules.